

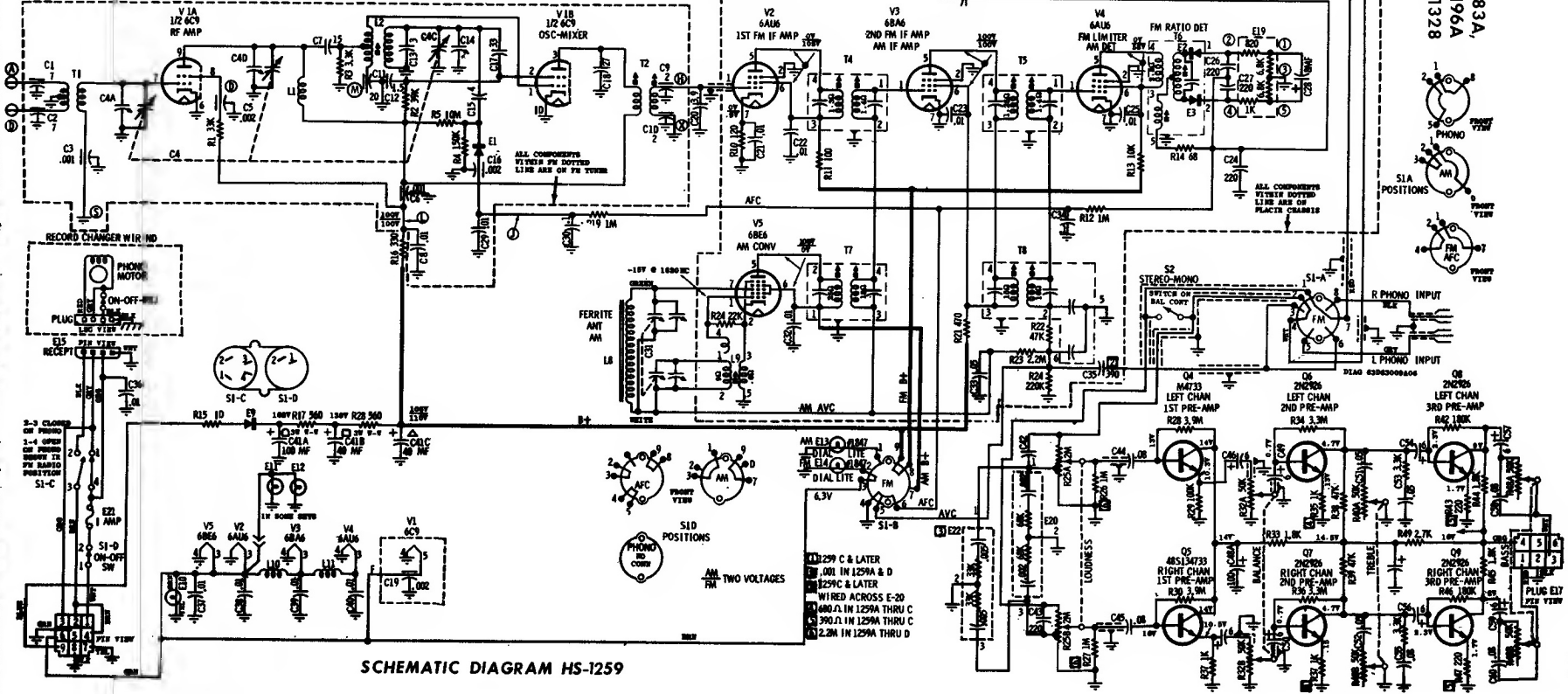
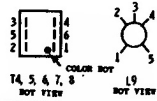
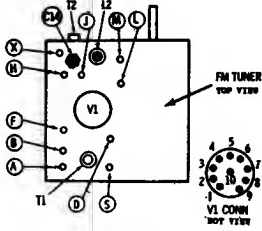
**MOTOROLA**

MODELS SK180A,181A,182A,183A,  
190A,191A,192A,193A, SD194A,195A,196A,  
CHASSIS HS-1241,1259, 1264,1328

NOTES:  
CAPACITORS - UNLESS OTHERWISE SPECIFIED,  
DECIMAL VALUES IN MFD; ALL OTHERS IN MMFD.  
VOLTAGES - MEASURED FROM POINT INDICATED  
TO CHASSIS WITH A VTVM,  $\pm 10\%$  NO SIGNAL INPUT  
TUNING RANGE - AM 530KC TO 1620KC (1F - 659KC)  
- FM 88MC TO 108MC (1F-10.7M)  
\*THIS VOLTAGE VARIES WITH SETTING OF R13  
#DENOTES FERRITE BEAD  
RESISTORS  $\pm 10\%$  UNLESS OTHERWISE NOTED

V TAKEN WITH S1 IN AM POSITION  
V TAKEN WITH S1 IN FM POSITIONS  
120V LINE - NO SIGNAL

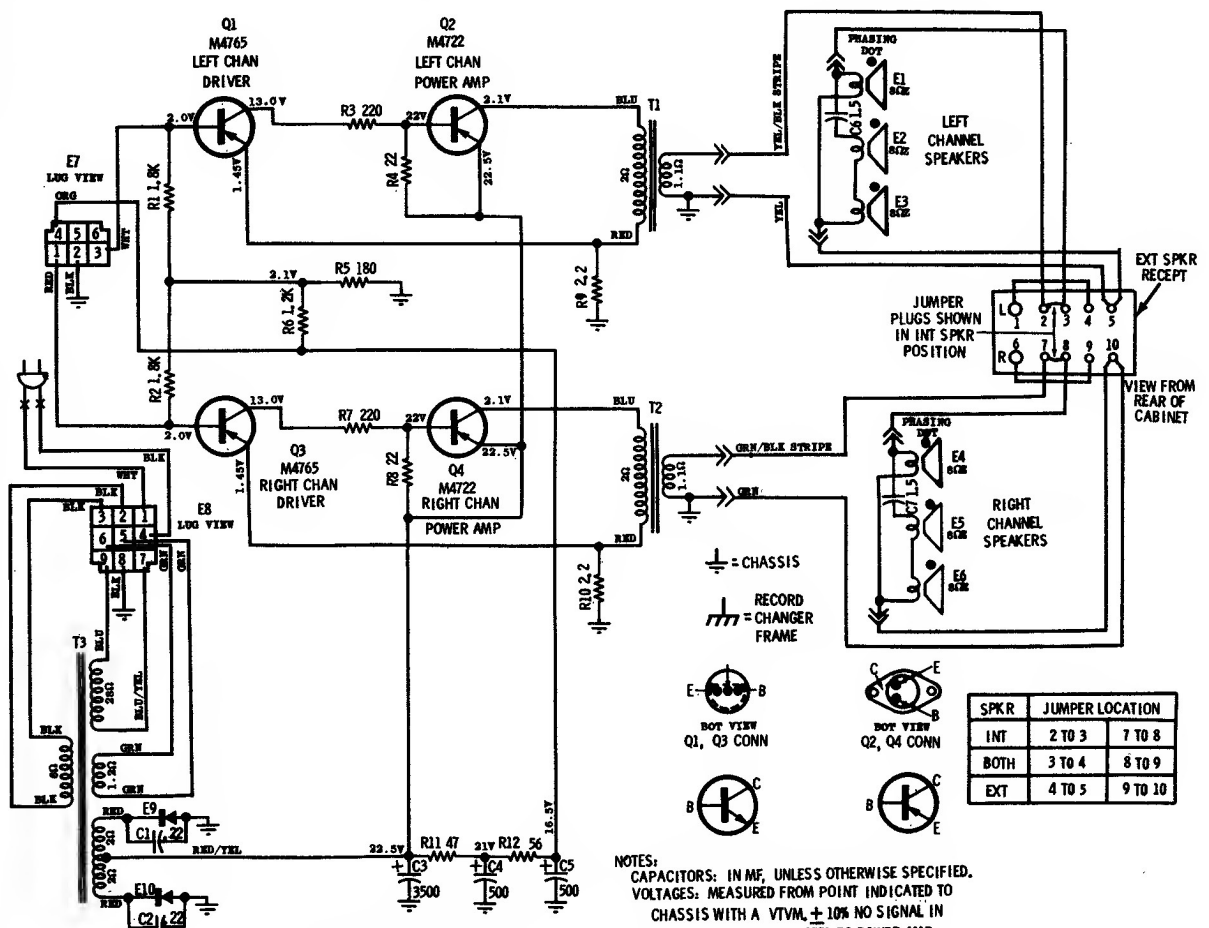
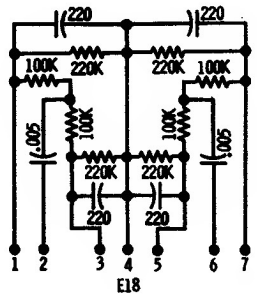
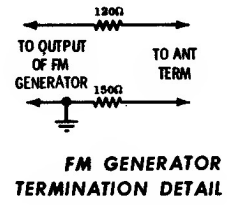
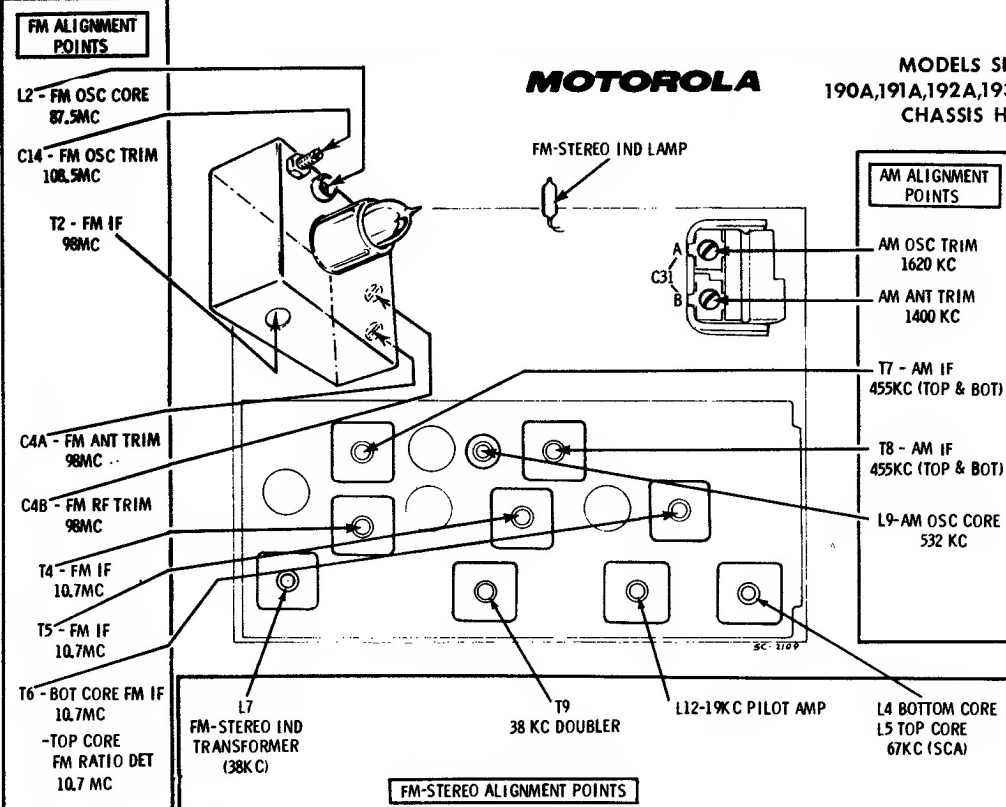
FM TUNER  
TOP VIEW



SCHEMATIC DIAGRAM HS-1259

# MOTOROLA

MODELS SK180A, 181A, 182A, 183A,  
190A, 191A, 192A, 193A SD194A, 195A, 196A  
CHASSIS HS-1241, 1259, 1264, 1328



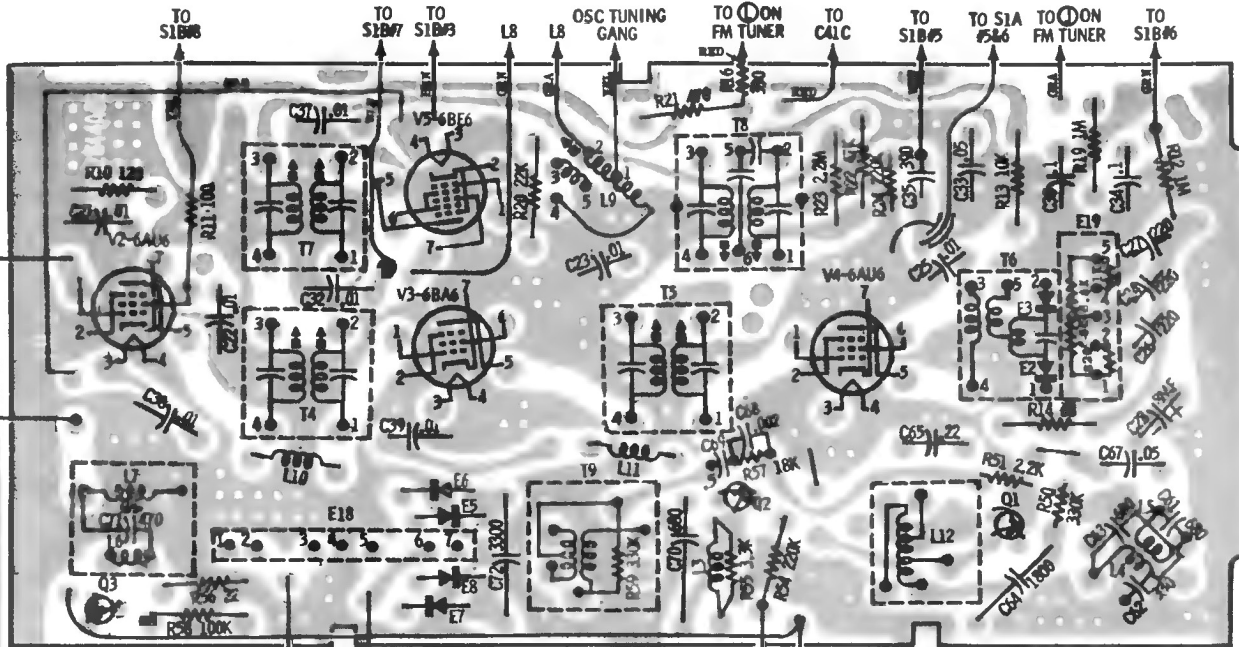
SPKR	JUMPER LOCATION
INT	2 TO 3    7 TO 8
BOTH	3 TO 4    8 TO 9
EXT	4 TO 5    9 TO 10

NOTES:  
CAPACITORS: IN MF, UNLESS OTHERWISE SPECIFIED.  
VOLTAGES: MEASURED FROM POINT INDICATED TO CHASSIS WITH A VTVM, ± 10% NO SIGNAL IN TUNER-PRE AMP CONNECTED TO POWER AMP

SCHEMATIC DIAGRAM HS-1264

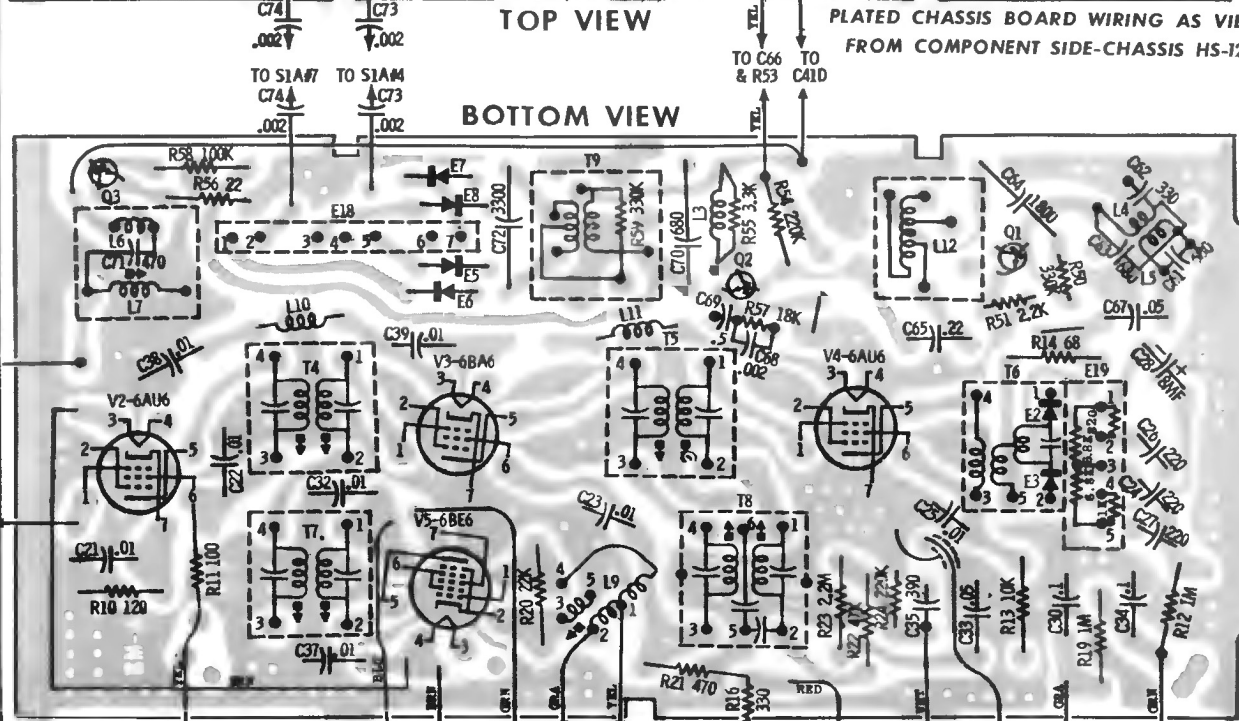
# MOTOROLA

MODELS SK180A,181 A,182A,183A,  
190A,191A,192A,193A SD194A,195A,196A  
CHASSIS HS-1241,1259, 1264,1328



TOP VIEW

PLATED CHASSIS BOARD WIRING AS VIEWED FROM COMPONENT SIDE-CHASSIS HS-1259



BOTTOM VIEW

PLATED CHASSIS BOARD AS VIEWED FROM BOTTOM-(COMPONENTS SHOWN ARE LOCATED ON OPPOSITE SIDE)-CHASSIS HS-1259